

Relationships

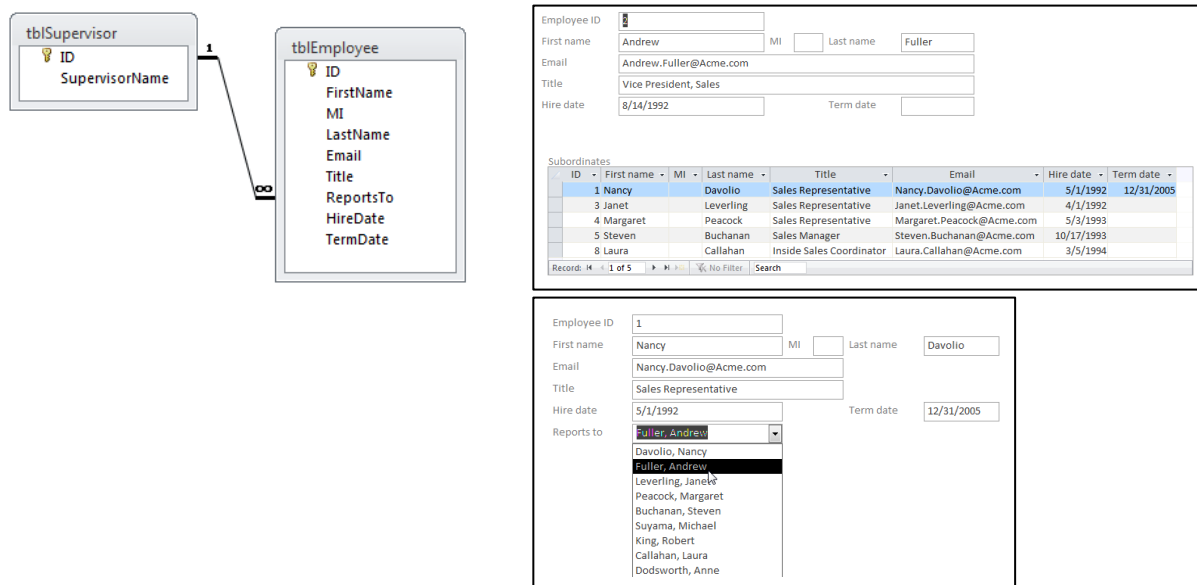
Summary

Relationship Type	# of Tables	How to display the relationship on the form.
One-to-one	1 or more	Text boxes
One-to-many	2	Main form with a subform -Or- Main form with a drop down.
Many-to-many	3	Main form with a subform and the subform has a drop down.

One-to-many

This is a relationship between records in two tables. The record in the main table may have many corresponding records in the related table. This is often called a parent child relationship because a parent (father) may have many children.

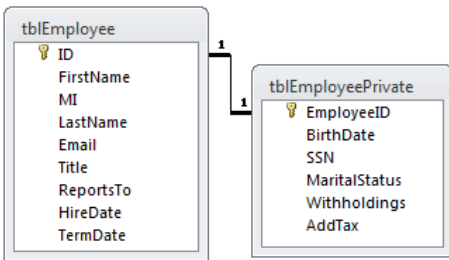
The relationship can be displayed on a form in one of two ways: either from the parent's point of view or from the child's point of view. When displayed from the parent's point of view you will see a main form and either a subform or list box. When displayed from the child's point of view you will see a drop down on the main form.



One-to-one

This can be a relationship between records in two tables. The records in one table may have zero or one record in the related table. From a database point of view all the fields from both tables could be combined into one table. However because of business rules they are separated.

When displayed in a form the fields in both tables will appear in text boxes. There will be no drop downs, no list boxes, and no subforms.

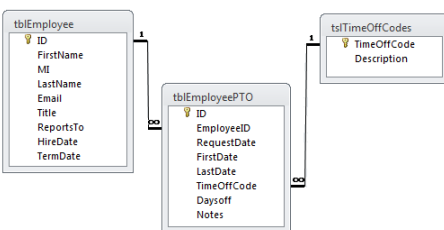


The form displays data for Employee ID 1. Fields include: Employee ID (1), First name (Nancy), MI (), Last name (Davolio), Email (Nancy.Davolio@Acme.com), Title (Sales Representative), Hire date (5/1/1992), and Term date (12/31/2005). A subform titled "Personal Information" contains: Birthdate (2/19/1952), SSN (987-65-4321), Marital status (\$), and Withholdings ().

Many-to-many

This is a relationship between records in three tables. There are two main or parent tables and there is one related or child table between them.

Many-to-many relationships are displayed when a main form has a subform and the subform has a drop down.



The form displays data for Employee ID 1. Fields include: Employee ID (1), First name (Nancy), MI (), Last name (Davolio), Email (Nancy.Davolio@Acme.com), Title (Sales Representative), Hire date (5/1/1992), and Term date (12/31/2005). A subform titled "Paid Time Off" contains a table with columns: First Date, Last Date, Time Off Code, and Request Date. The table shows several records, with the last record highlighted and its "Time Off Code" dropdown menu open, showing options: Vacation, Personal Leave, Sick, and Vacation.

First Date	Last Date	Time Off Code	Request Date
Mon 03-Jul-2006	Fri 07-Jul-2006	Vacation	Mon 19-Jun-2006
Fri 08-Jul-2005	Tue 19-Jul-2005	Sick	Mon 20-Jun-2005
Thu 23-Dec-2004	Sun 02-Jan-2005	Vacation	Tue 30-Nov-2004
Fri 19-Dec-2003	Mon 22-Dec-2003	Personal Leave	Tue 09-Dec-2003
Thu 05-Dec-2002	Sun 15-Dec-2002	Vacation	Mon 02-Dec-2002